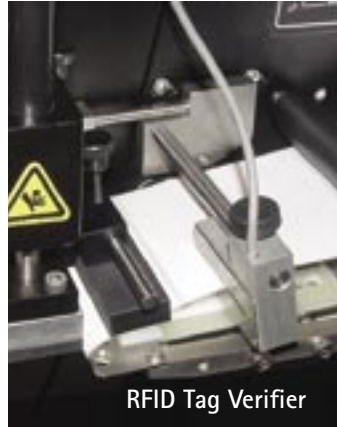
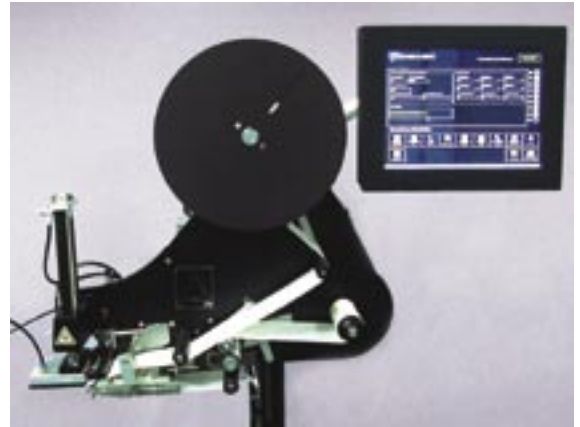


# ACCU-SORT®

# FAST Tag™ Applicator



RFID Tag Verifier



**Bolt-on solution for quick RFID compliance**—Lower total cost of ownership versus manual application systems

**Automatic encoding and application of RFID tags (side or top apply)**—Minimizes tag damage by reduced manual handling, and provides consistent tag placement for the highest read rates possible

**Flexibility to locate RFID tag in different location than bar code/human readable label, and X/Y position control for optimum tag placement**—Allows optimal tag location for highest read rate

**Verification and automatic reject of defective tags before application to the carton**—Ensures that no defective tags enter the supply chain

## Overview

The FAST Tag Applicator offers you a turn-key automated solution for placing RFID tags on cartons. This solution is part of Accu-Sort's "Tag-to-Ship" centralized system architecture, which allows it to be seamlessly integrated with your existing data management infrastructure through Accu-Sort's FAST Tag DataServer solution, making it scalable as your needs grow in the future.

## Technical Highlights

The FAST Tag RFID Tag Applicator is based on proven Videojet Labeljet technology. The integral stepper motor drives the tag web at up to 98 feet per minute (30 m/min.) The easy-to-operate touch screen control makes product selection and setup just a touch away.

RFID tags are tested by the integrated RFID tag verifier before and after encoding prior to being placed on the product. Defective tags bypass the applicator and are fed through to the takeup reel. This ensures that only programmable/readable tags are placed on the product and no defective tags enter the supply chain.

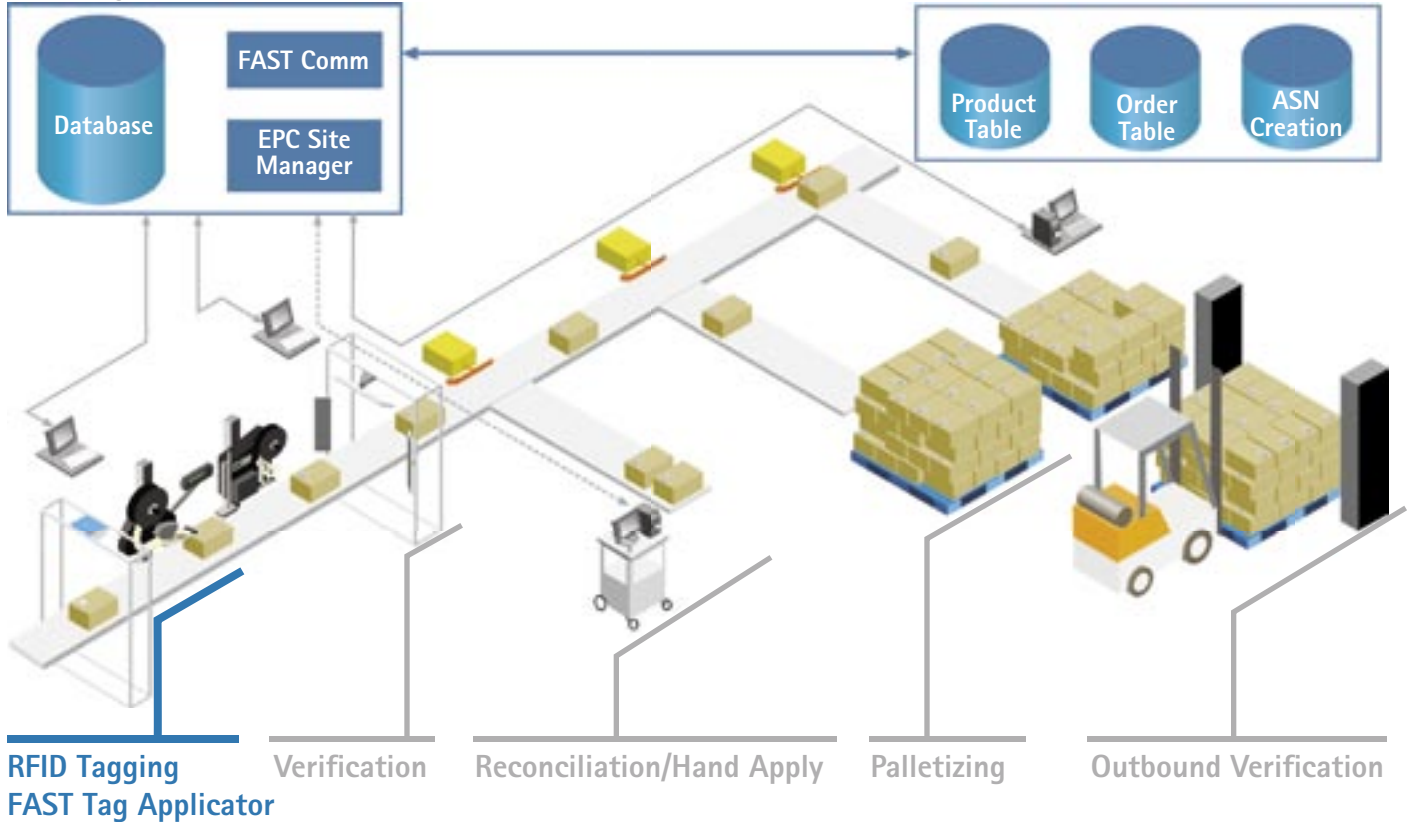
The FAST Tag RFID Tag Applicator manages EPC tag serial numbers for each product. One year of support and upgrades ensures EPC compliance as standards evolve. Pallet tags can be generated after a pallet has been completely filled. The FAST Tag RFID Tag Applicator can easily be integrated with existing legacy IT and ERP/WMS systems and provides simplified production statistics.

# FAST Tag Applicator

## FAST Tag™ Tag-to-Ship RFID System Solution

### FAST Tag DataServer

### Warehouse Management System (WMS)



## Specifications

### RFID

Read/Write Frequencies	902-928MHz
Protocols Supported	Class 0/0+, Class 1 and Future Gen 2
Tag Size Supported	4"x6", 4"x2", 4"x4", 4"x1", 2"x2"

### System Specifications

Application Method	Wipe or tamp, top or side apply
Digital I/O	4 input/4 output
Serial Port	RS-232
USB Ports	2
Ethernet	1

### Physical Specifications

Dimensions	14" x 22" x 35"
Weight	75 lbs
Operating Temperature	32°F to 113°F (0° to 45°C)
Power	230 or 110 VAC 50-60Hz



For more information about auto-ID and material handling solutions, contact us at:

ACCU-SORT® SYSTEMS, inc.  
1-877-ASI-RFID  
info@accusort.com | www.accusort.com

VIDEOJET® TECHNOLOGIES, Inc.  
1-630-860-7300  
www.videojet.com

©2005 Accu-Sort Systems, inc. and Videojet Technologies, Inc. All rights reserved.